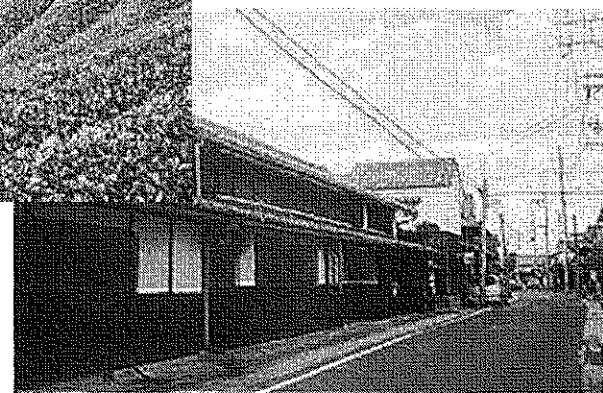
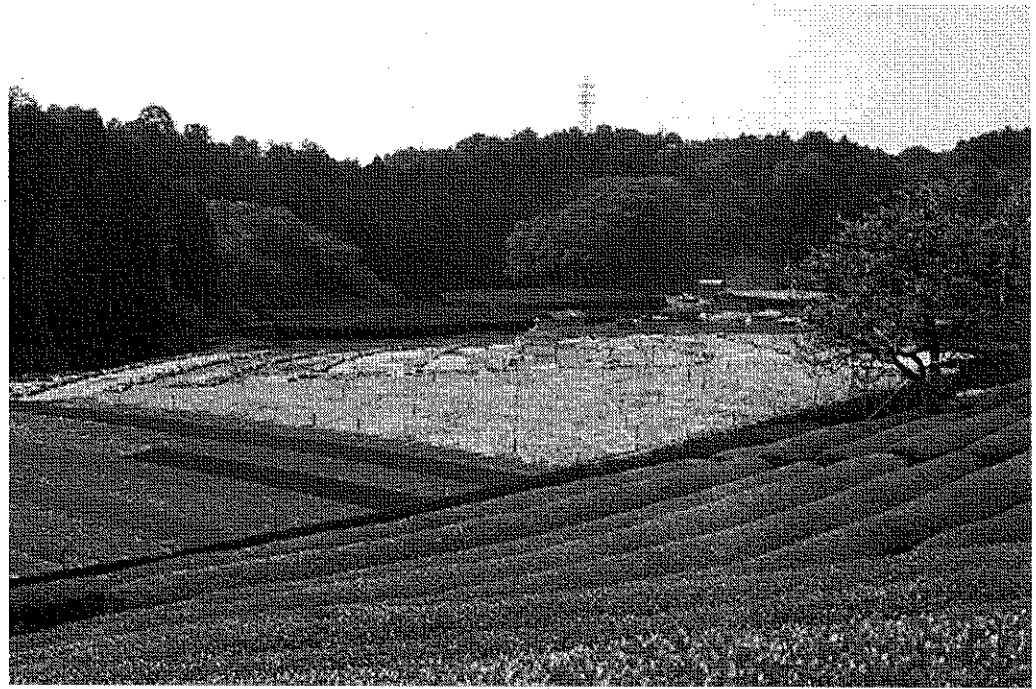


京都・宇治の茶文化について

参考資料1

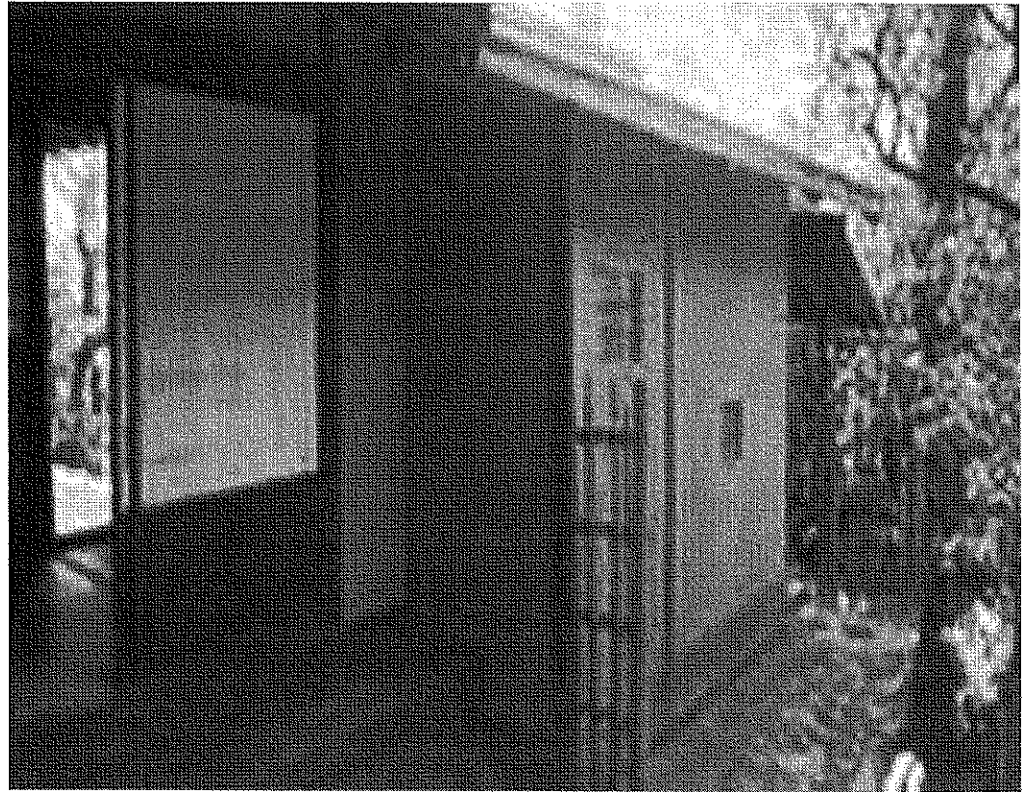


覆下茶園

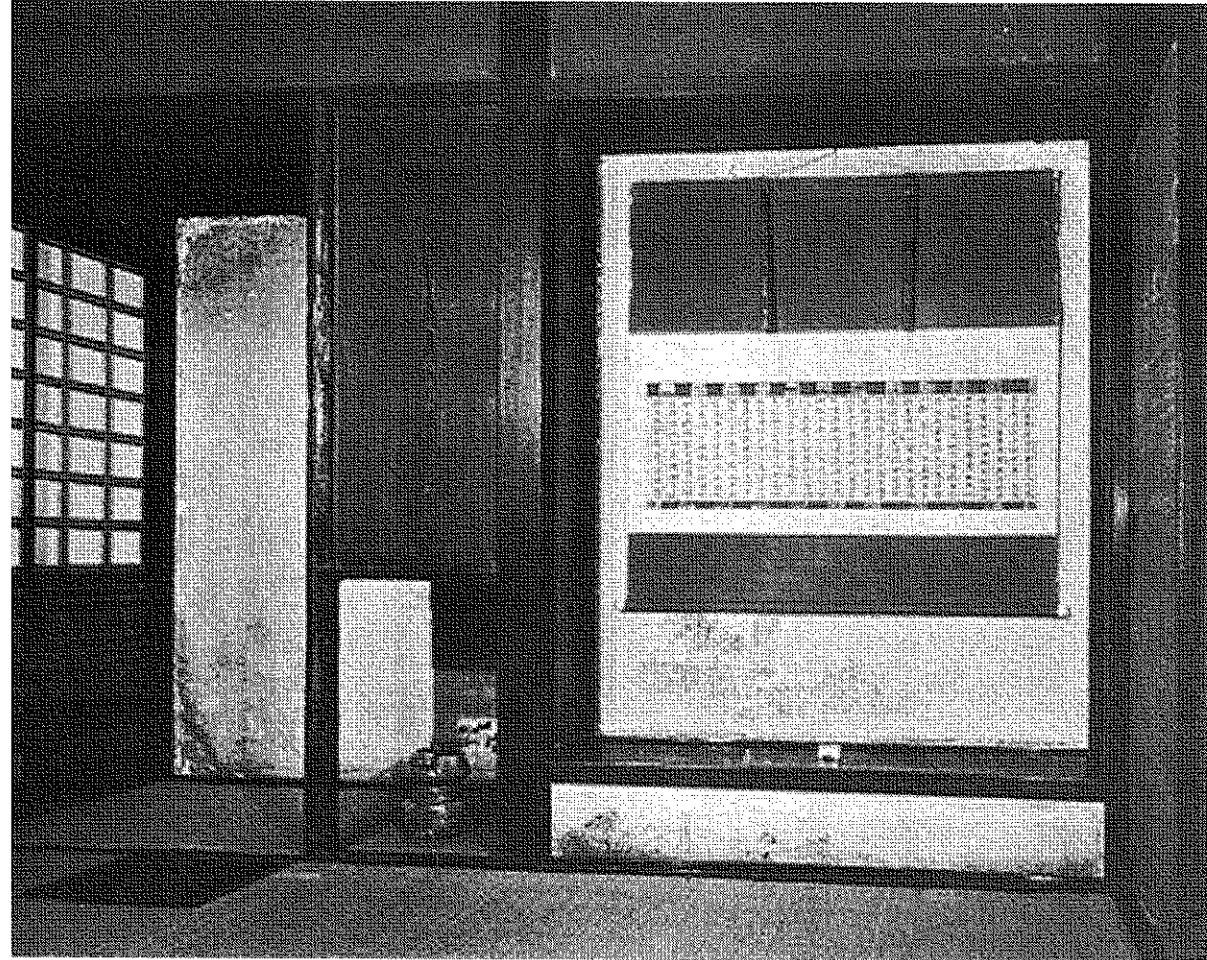


宇治市白川

待庵(大山崎町)



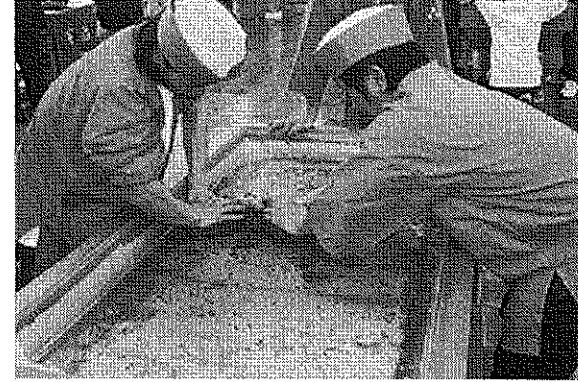
蜜庵(京都市北区)



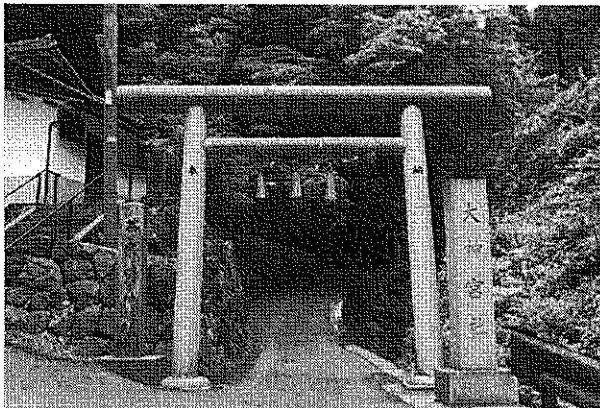
永谷宗円生家(宇治田原町)



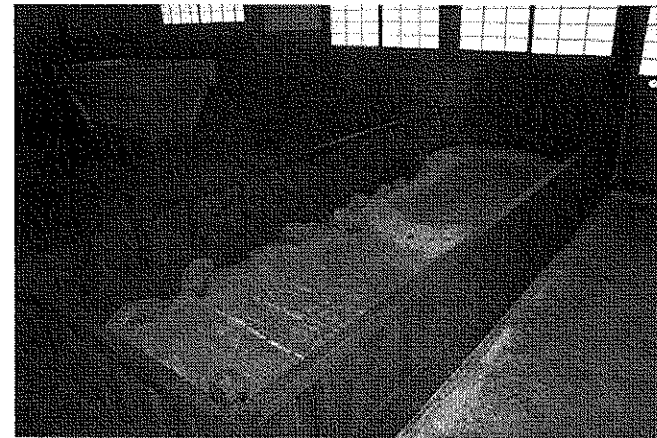
生家



宇治茶手もみ製法

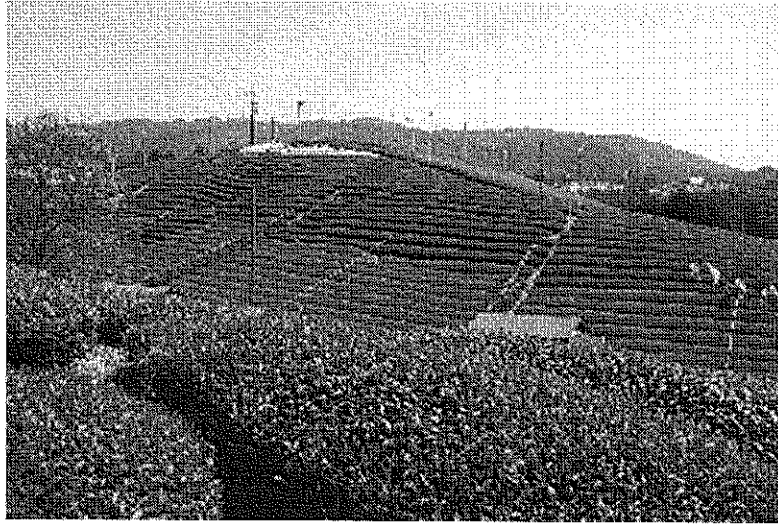


茶宗明神社



焙炉跡

煎茶茶園



宇治田原町



和束町



南山城村